

Control Your Network! Infoblox Overview

Franck Bernard
CM Finland/Norway/Baltic

Infoblox: Market Leader in Network Control

Founded in 1999

Headquartered in Santa Clara, CA
with global operations in 25 countries

Leader in technology
for network control

Market leadership

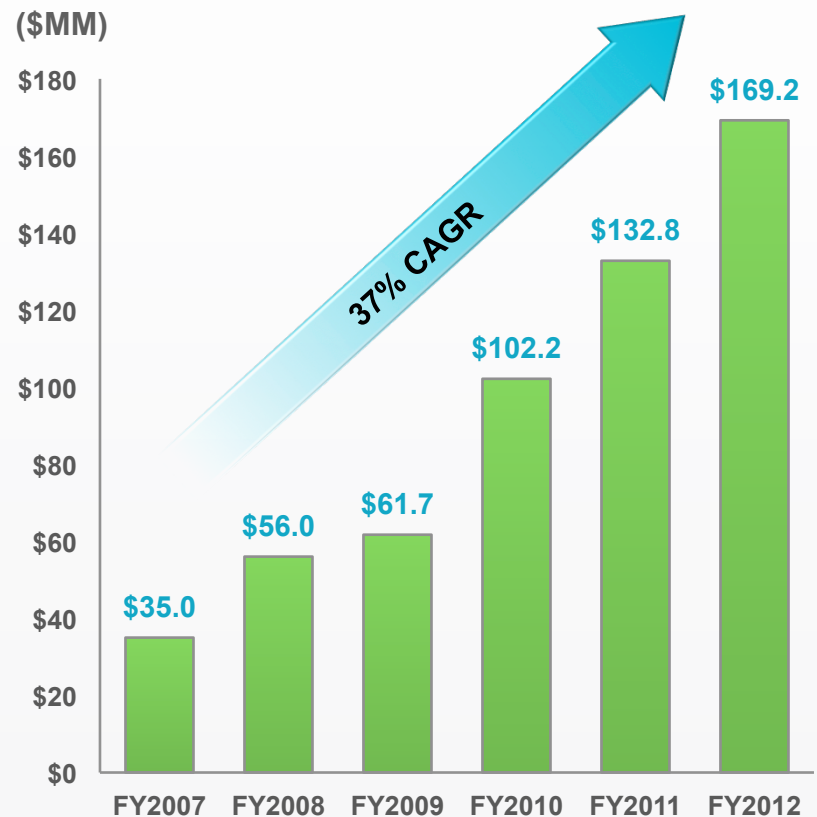
- Gartner Strong Positive Rating
- 40%+ Market Share

6,300+ Customers, 45,000+
systems shipped

20 patents, 27 pending

IPO April 2012: NYSE BLOX

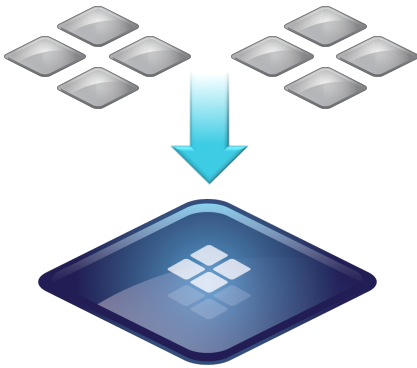
Total Revenue
(Fiscal Year Ending July 31)



The Perfect Storm – Impacting the Network

Triggers that are Redefining the Network

CONSOLIDATION



MOBILE DEVICE EXPLOSION



CLOUD / VIRTUALIZATION



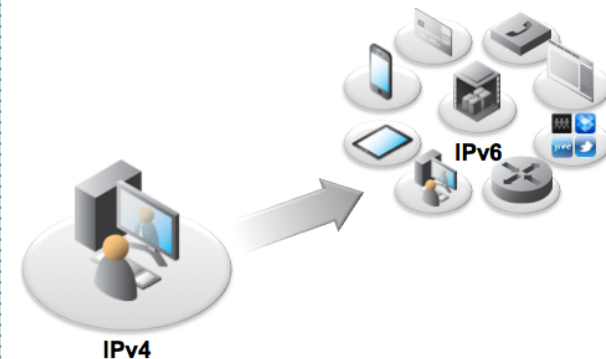
SOFTWARE DEFINED NETWORKS



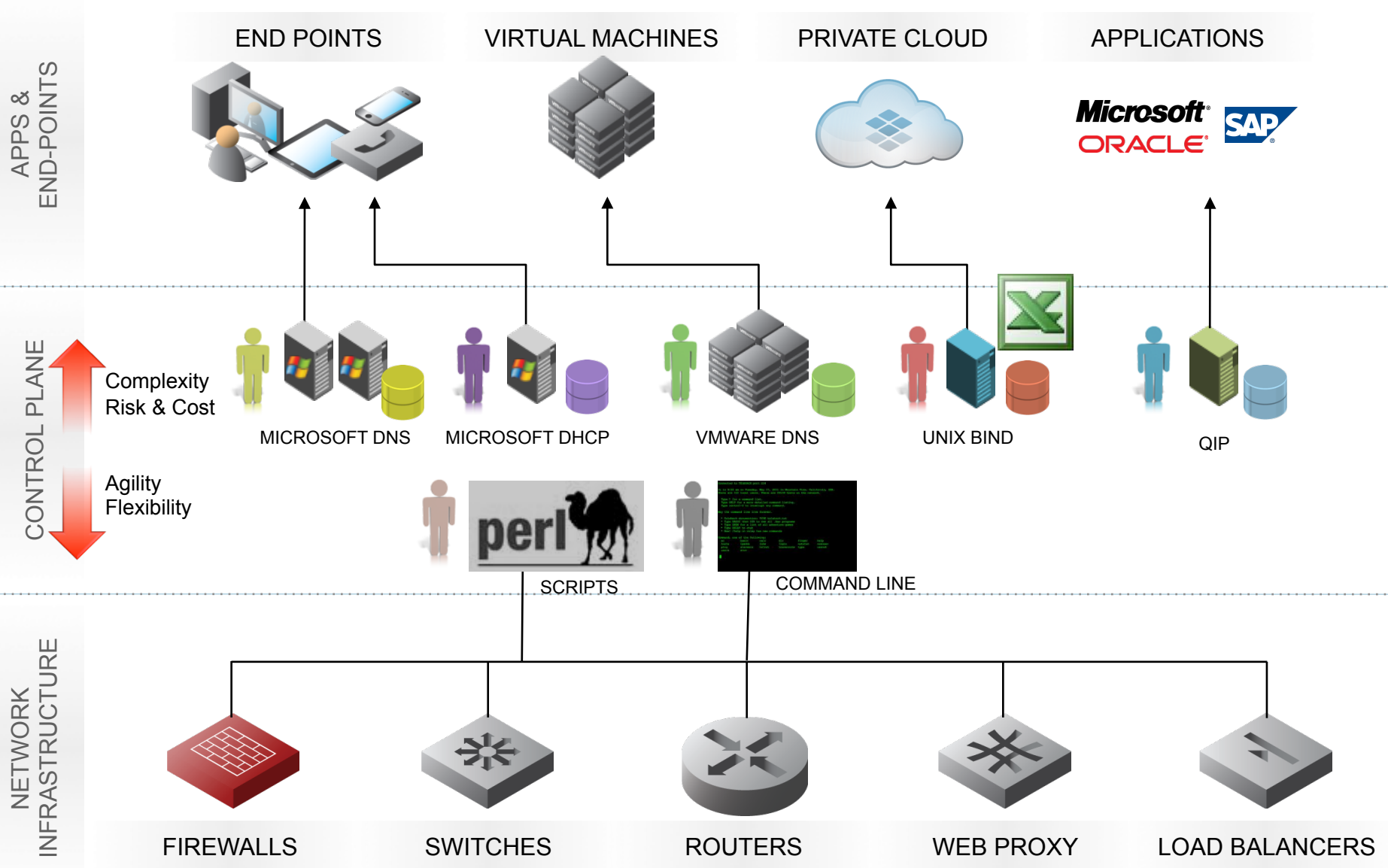
THREAT LANDSCAPE



IPv6 TRANSITION

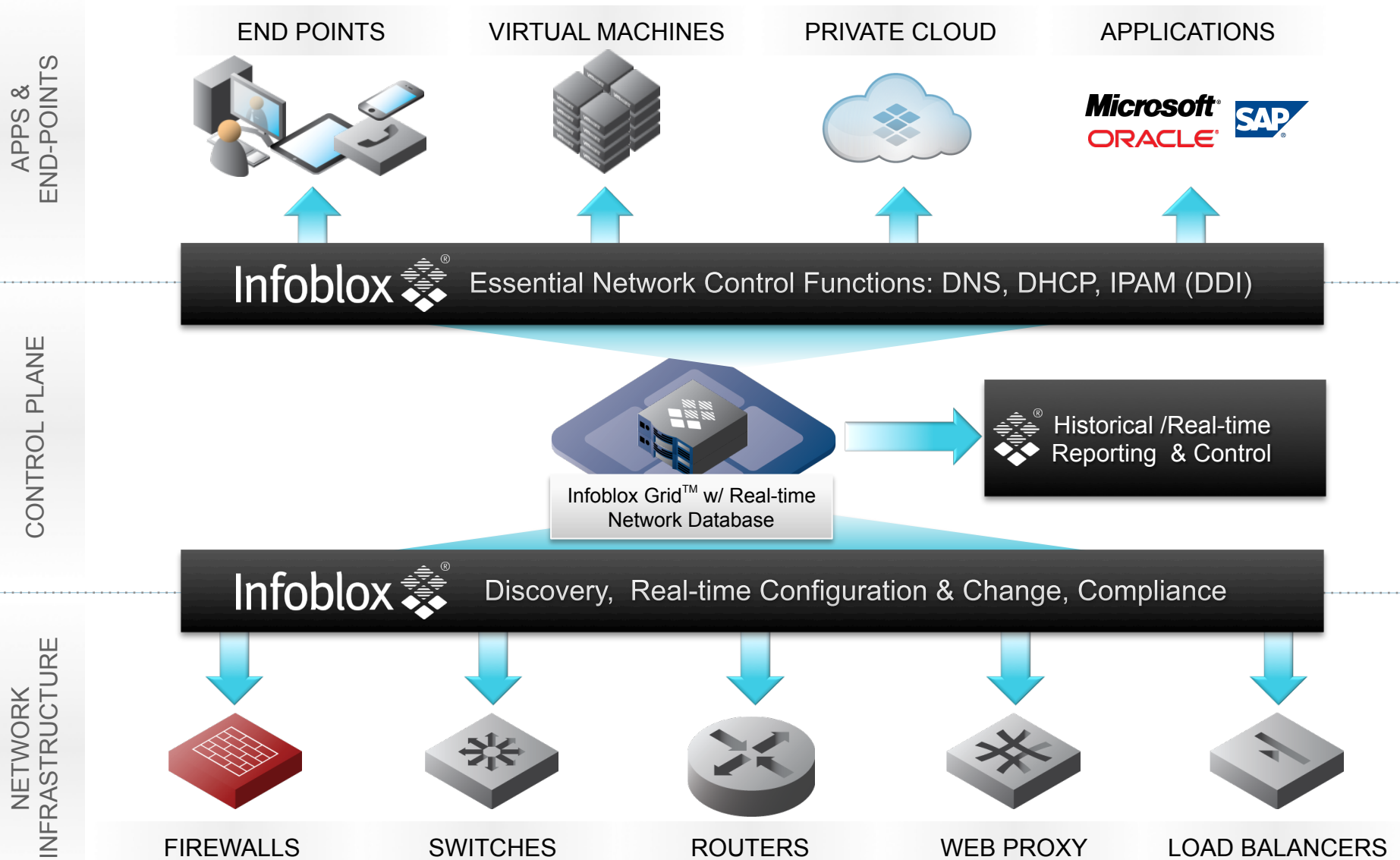


The Alternative Without Infoblox



What We Do:

Innovative Technology for Network Control



Infoblox DNS, DHCP & IPAM

Automated IP Provisioning and Always-on Network Services

Global Network, Subnet, & IP addresses planning and allocation

Discovery & Reconciliation

Real-time and historical insight on connected IP endpoints and networks

Delegation and automation of IP provisioning tasks

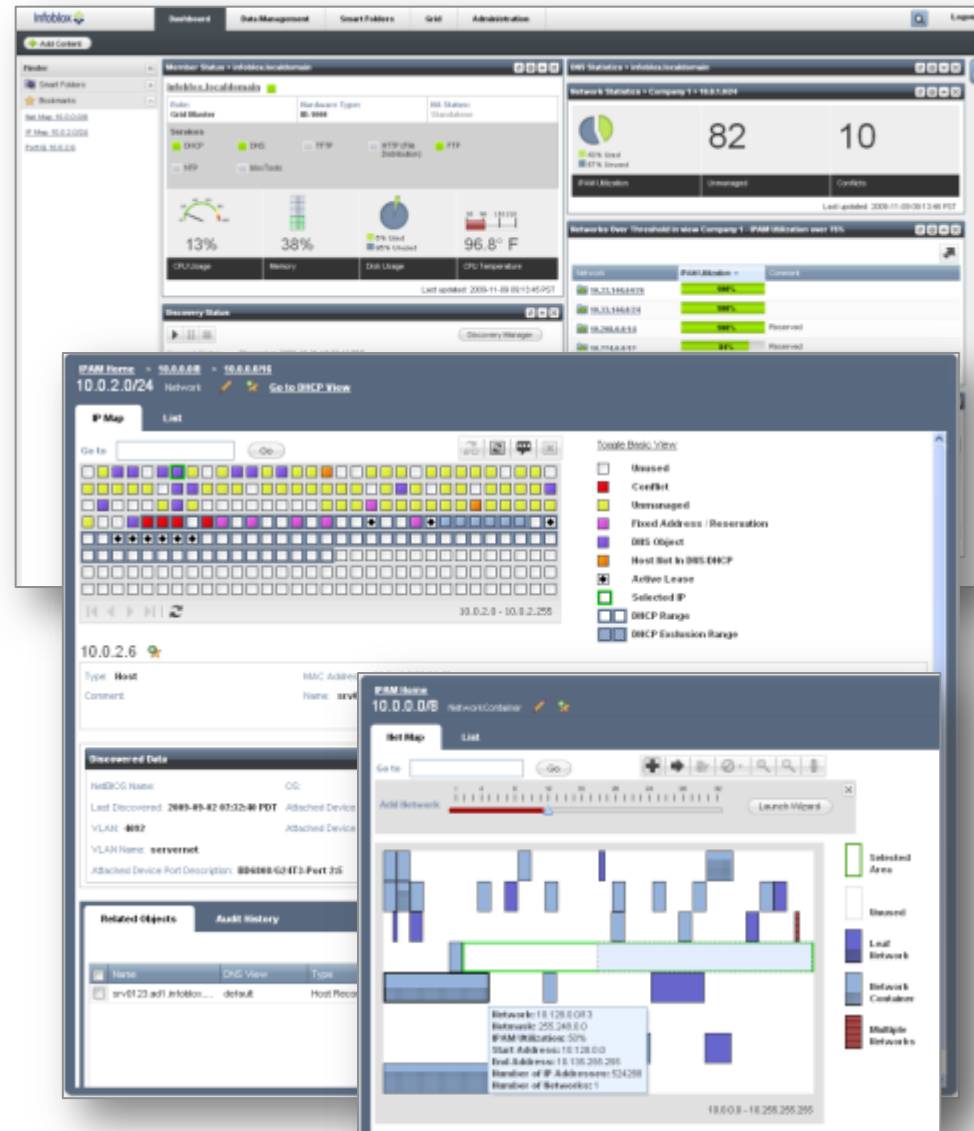
Direct VMware Provisioning Integration

Detailed Auditing and reporting

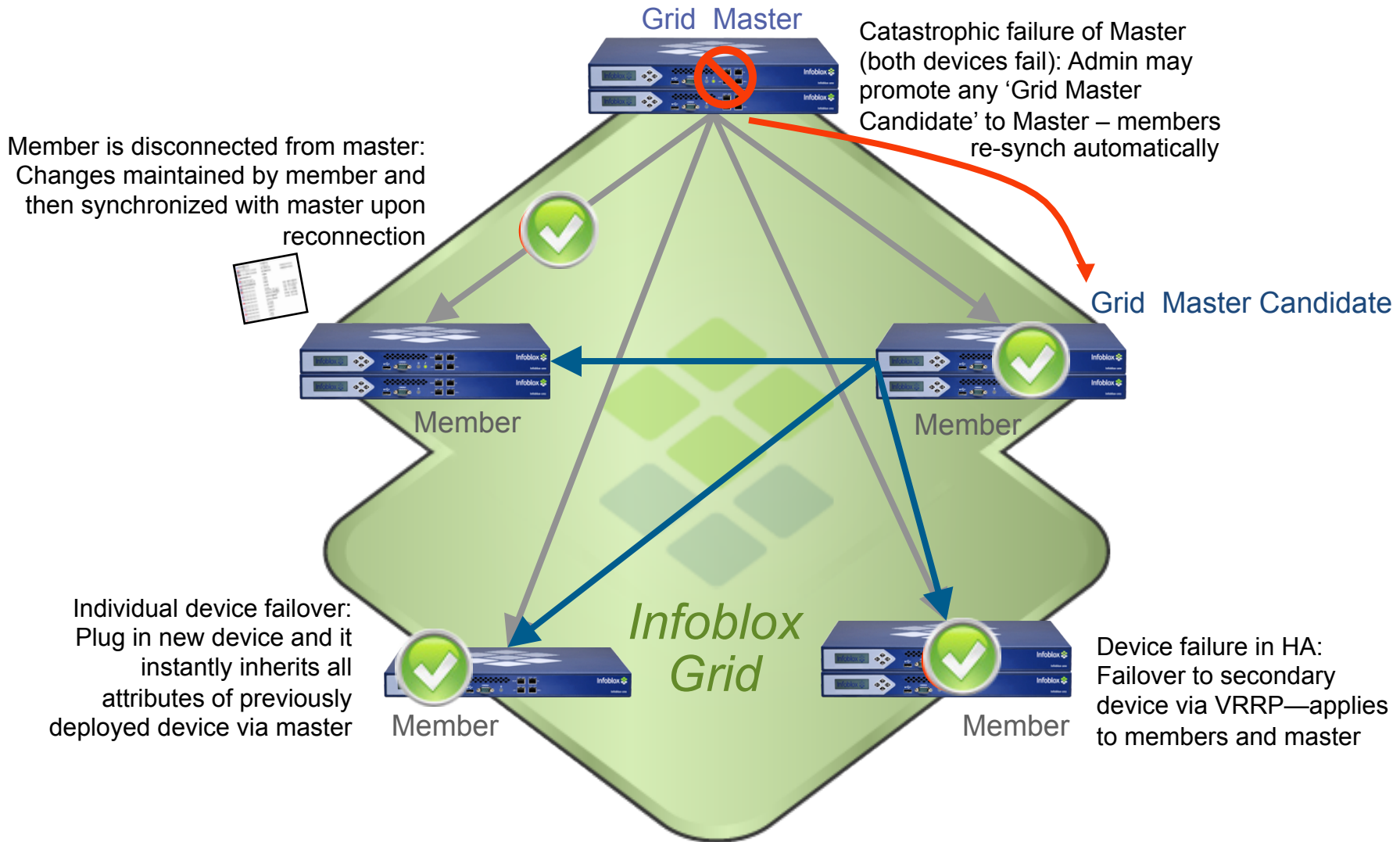
Robust and secure
DNS infrastructure

Active-Active
DHCP Failover

Agentless management of Microsoft
DNS/DHCP



Grid Resilience, automated disaster recovery



Network Infrastructure Automation

Automated network infrastructure data collection and analysis

Powerful network visualization

Wizard based policy management

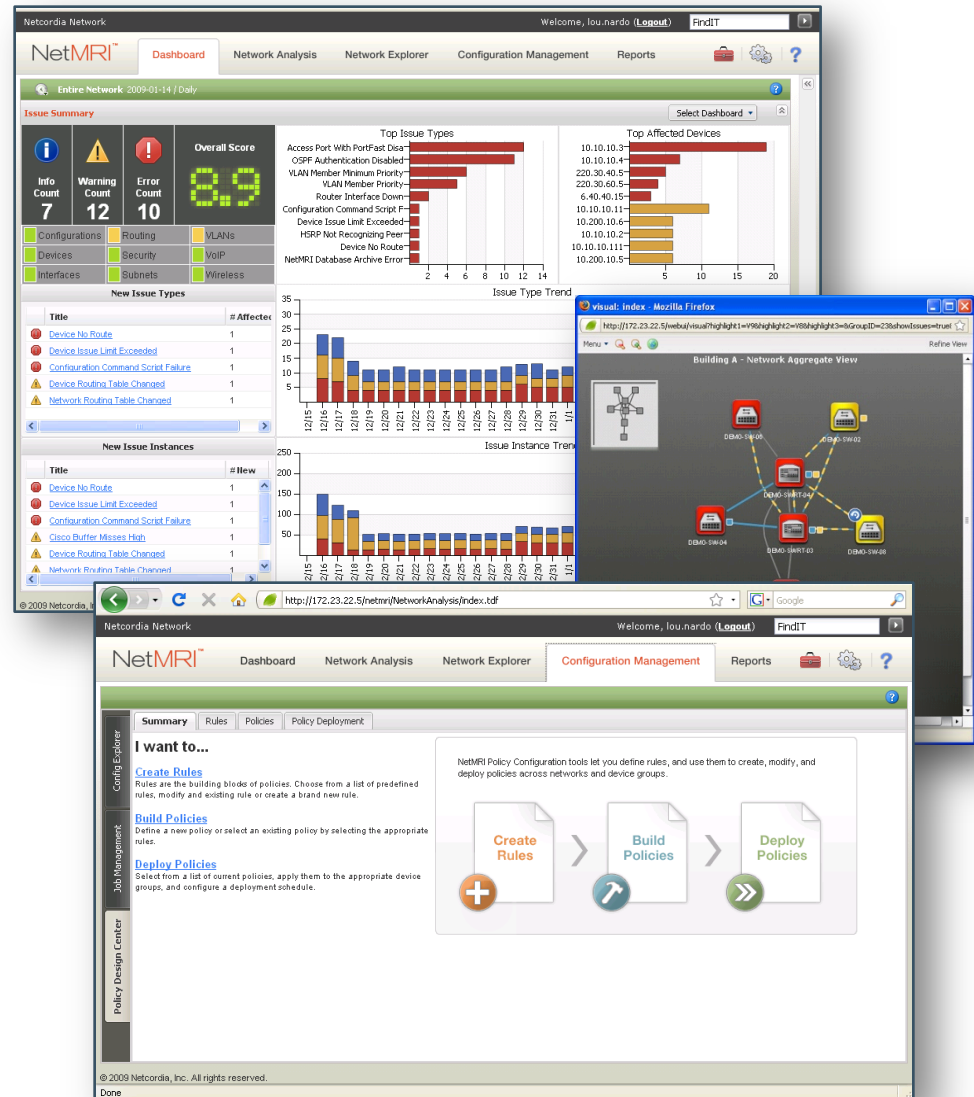
Shows who changed what, where and when

Change impact analysis

Switch port capacity management

Built-in industry networking best practices rules and policy templates

Integrated with Infoblox IPAM



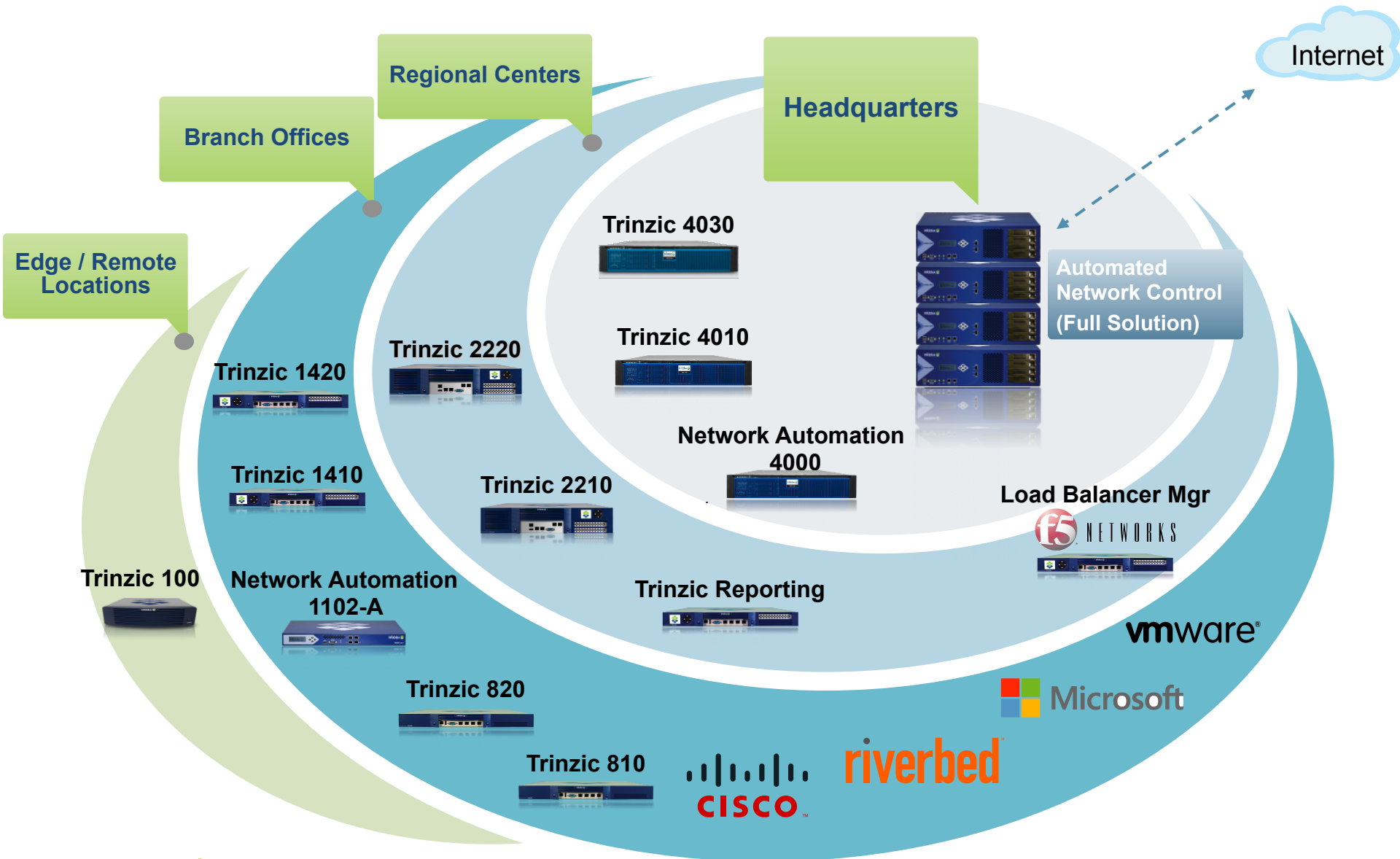
Network Automation Solutions

		SPM
<u>Extend visibility</u> <ul style="list-style-type: none">• Improve accuracy• Enhance security• Automate IPAM	Advanced Discovery	✓
	Topology Awareness	✓
	Switch Capacity	✓
	Sync with IPAM	✓

Network Automation Solutions

		SPM	ACM	NetMRI
<u>Extend visibility</u> <ul style="list-style-type: none"> • Improve accuracy • Enhance security • Automate IPAM 	Advanced Discovery	✓	✓	✓
	Topology Awareness	✓	✓	✓
	Switch Capacity	✓	✓	✓
	Sync with IPAM	✓	✓	✓
<u>Control</u> <ul style="list-style-type: none"> • Improve time to value • Delegate authority • Lower risk • Provision dynamically 	Change Automation & Detection		✓	✓
	Switch Port Control		✓	✓
	Approval Workflows		✓	✓
	Configuration Templates		✓	✓
	Pre-Packaged Automations		✓	✓
<u>Analysis/Enforcement</u> <ul style="list-style-type: none"> • Ensure compliance • Find potential issues • Maintain standards • Plan better 	Configuration Analysis			✓
	Compliance Policy Design			✓
	Configuration Policy Enforcement			✓
	Single-click Compliance Reports			✓

Full Range of Purpose-built Appliances



Achieving Automated Network Control

Automated Network Control

Integrated Network Services & Automation Solutions

Trinzic DDI

SPM

ACM

NetMRI

Dynamic Virtual IP
Assignment &
Tracking



Virtual
Machines

Non-stop
Network Services



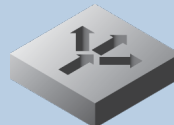
Servers
& Applications

Seamless IPAM
for Microsoft



MS DNS/DHCP
Servers

Dynamic discovery
& device location
tracking



Routers

Advanced
Network
Automation



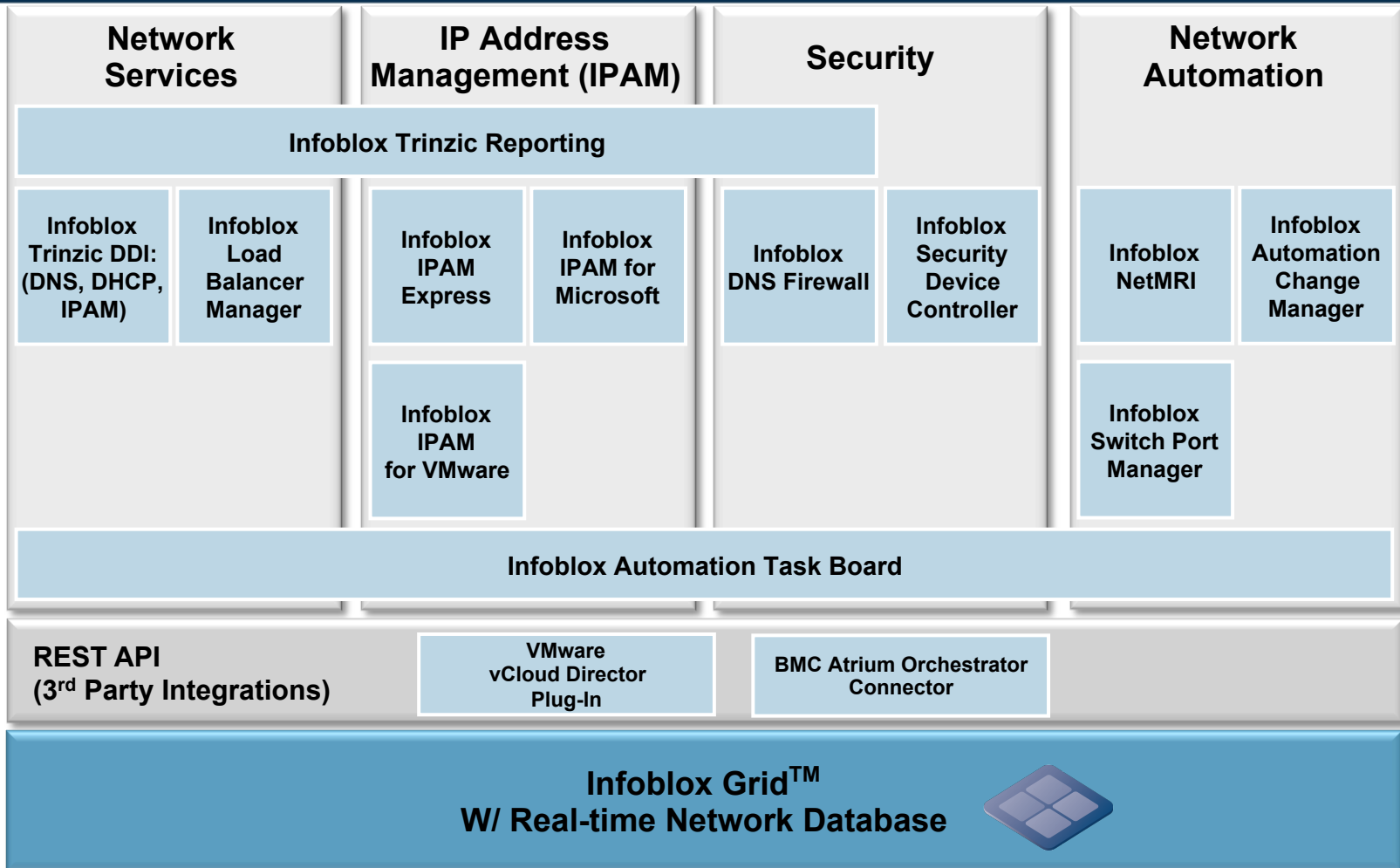
Firewalls

Built-in Compliance
& Policy
Management



End Users

Infoblox Software Products Overview



Purpose-Built, Hardened Physical & Virtual Appliances
(Range of Appliances for Data Centers & Network Edge to ISPs & Mobile Operators)

Infoblox Value To Our Customers



Available

- Grid™ technology for fault tolerance, easy updates and one-click DR
- Optimized for enterprise demand & performance
- Authoritative source for network data



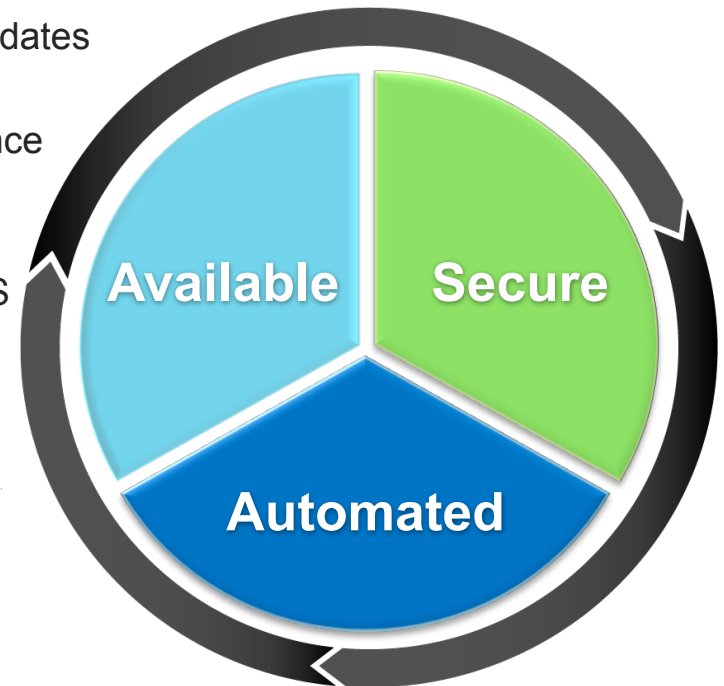
Secure

- Secure hardware form-factor & hardened OS
- Designed to minimize vulnerabilities and attack surfaces
- Common Criteria certified



Automated

- Powerful automation of manual processes
- Reduce change errors & assure compliance
- Save time, money and effort



Delivered as an Integrated Solution

Thank You!

Q&A

Single “Click” Compliance

Build Consistency

Hundreds of packaged analysis rules

Built-in remediation

Built-in compliance reports

Proactive alerts for policy violations

Live and historical status, trends and reports

Wizard for encoding complex rule logic

NetMRI Policy Configuration tools let you define rules, and use them to create, modify, and deploy policies across networks and device groups.

Create Rules > Build Policies > Deploy Policies

Rules

- AAA Accounting
- AAA Login**
- AUX Exec Timeout
- AUX Login
- AUX Transport Input
- Banner Exec
- Banner MOTD
- BOOTP Server
- Buffered Logging
- CDP Service
- Console Exec Timeo
- Console Logging
- Console Login
- Console Password
- Console Transport C
- Disable DHCP Broad

Rule Name: AAA Login

Short Name: IOS-AAA-002

Author: Netcordia, Inc.

Severity: error

Description: Make sure AAA login is enabled on the device. References: NSA; SANS 4.1.1; PCI 8.3 This rule is...

Remediation: As part of AAA setup for the device, ensure AAA login is...

[Edit Rule Properties](#)

Summary of Findings

Section	Requirements	Supporting Evidence	Results
1.1.2	Establish firewall configuration standards that include a current network diagram with all connections to cardholder data, including any wireless networks.	NetMRI automatically provides a detailed discovery of network devices and their connection topology. Please look at table 1, below.	Pass
1.3.6	Secure and synchronize running and startup router configuration files.	NetMRI automatically collects and stores running and saved configurations. Please look at table 2, below.	Pass
2.1	Change vendor-supplied defaults login and data retrieval credentials.	NetMRI automatically verifies that network devices do not allow logins using vendor supplied defaults and passwords. Please look at table 3, below.	Pass
6.2	Implement automated audit trails for all system components.	NetMRI Event Analysis automatically collects the log data of network devices. Please look at table 4, below.	N/A
10.6	Review logs of system components daily.	NetMRI Event Analysis automatically collects and continuously analyzes the log data of network devices according to user defined rules. Please look at table 4, below.	N/A
10.7	Retain audit trail history for at least one year with a minimum of 3 months online availability.	NetMRI Event Analysis automatically archives the log data of network devices. Please look at table 4, below.	N/A
11.5	Verify personnel to unauthorized modification of critical system files.	NetMRI automatically detects configuration changes, and collects and stores running and saved configurations. An issue is generated when a configuration change is detected. Please look at table 5, below.	Pass
12.16.1	Maintain a list of connected network entities.	NetMRI automatically discovers network devices and their connection topology. Please look at table 1, below.	Pass

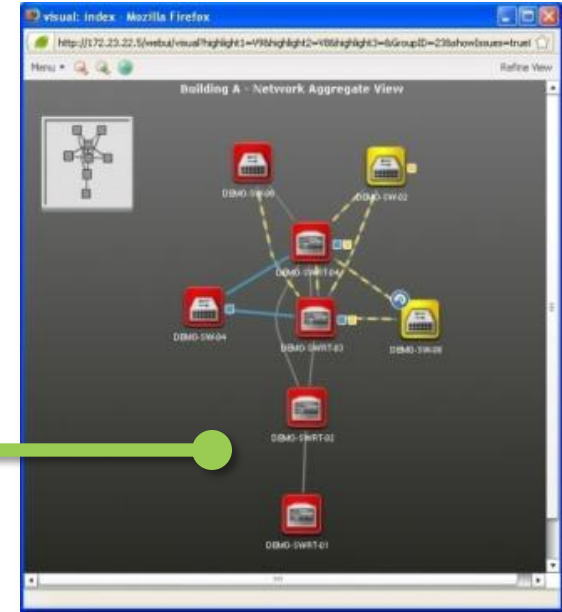
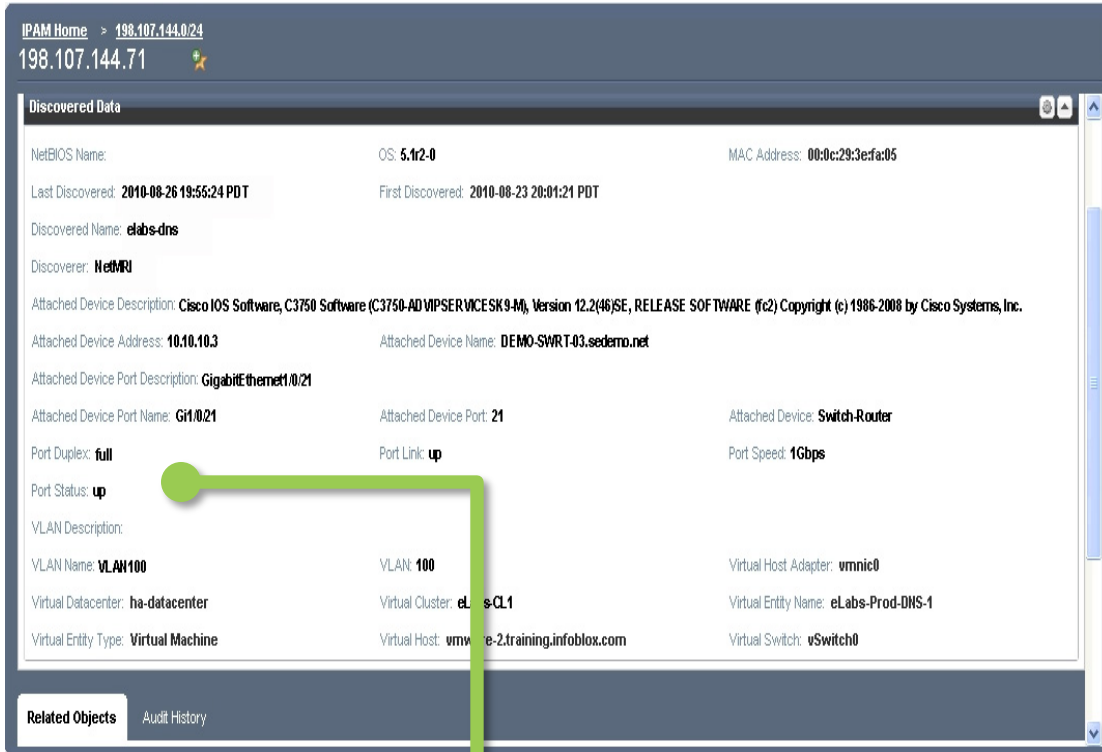
Evidence

Table 1: Network Device List

This is a list of network devices that NetMRI has discovered within the range specified by report filters.

Device	IP Address	Model	Chassis Serial Number	Version	Manager?
Total Device Count: 42					

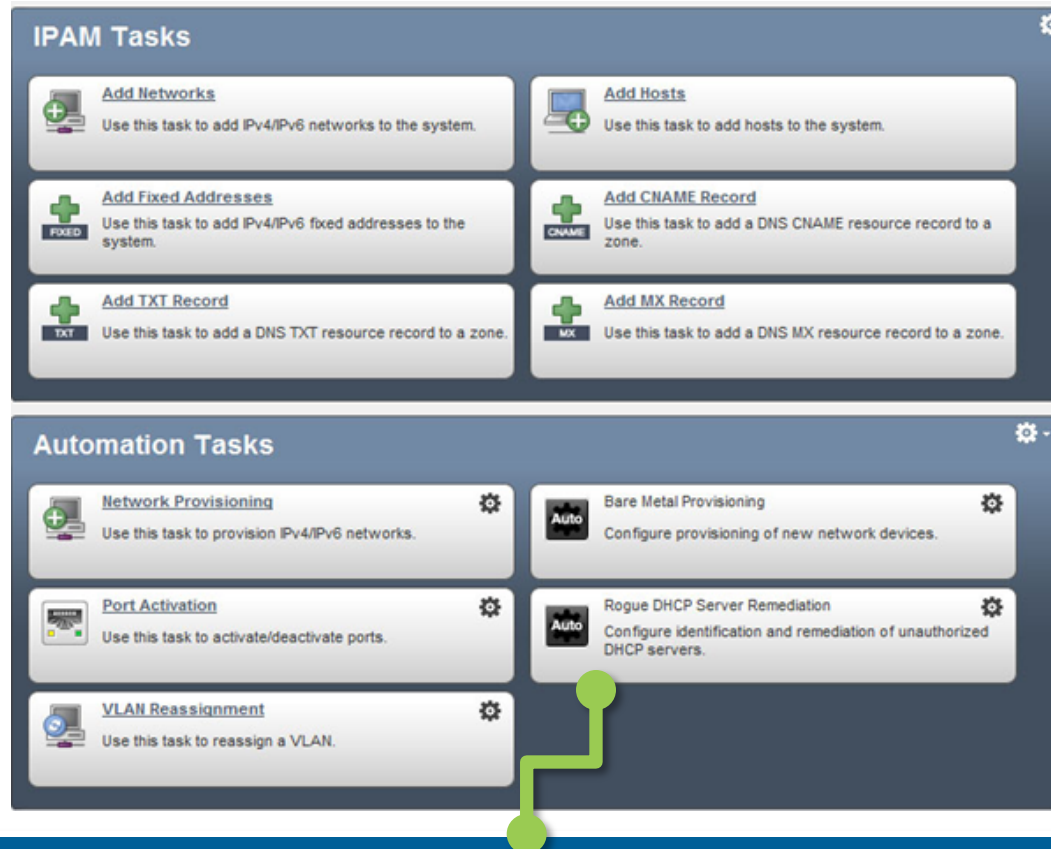
Enabling Dynamic DDI



Dynamic DDI extends visibility and accuracy within IPAM

- Automatically adds network parameters and devices
- Understands relationship between device and the network
- Seamless, dynamic updates

DDI Configuration Automation



Automated Tasks Board automates DDI configurations

- Spans organizational boundaries by delegation
- Streamlines processes and lowers risk
- Tightly integrates DDI and network provisioning
- Improves time to deployment and value